

ART FIRST



Art First  
21 Eastcastle Street  
London W1W 8DD  
[www.artfirst.co.uk](http://www.artfirst.co.uk)

[info@artfirst.co.uk](mailto:info@artfirst.co.uk)  
+44 (0)20 7734 0386

## NATURAL HISTORY

27 JUNE – 16 AUGUST 2013

Page Illustrated artist

- 1 Gillian Barlow / Joni Brenner / Susan Michie
- 2 Jack Milroy / David Price
- 3 Helena Goldwater / Brad Hammond / Christine Borland / Helen MacAlister
- 4 Elizabeth Butterworth / Barry Thompson / Simon Morley
- 5 Liz Harrison / Alan Kilpatrick / Eileen Lawrence
- 6 Simon Lewty / Anya Gallaccio / Will Maclean
- 7 Karel Nel / Lino Mannocci / Donald Teskey
- 8 Rebecca Partridge / Elizabeth Blackadder / Mimei Thompson



**Gillian Barlow**  
Ash Branches, 1995  
watercolour, 50x65cm

**Joni Brenner**  
After Tapies, 2008  
Sika-guard consolidated clay, 18x18cm



**Susan Michie**  
Skull Detail (Dartmoor), 2012  
Photographic print, ed. 10,  
81x106cm



**Jack Milroy**  
English Country Garden  
2011  
Cut book construction



**David Price**  
The Human Seasons  
2013  
Oil on gesso on panel  
86cm across (decagon)

**Elizabeth Butterworth**  
Lear's Mackaw, 2011  
Watercolour, 25.4x34.3cm



**Barry Thompson**  
Bard of Surburbia (Blue Tit), 2008  
Pencil on paper, 35x22cm

**Simon Morley**  
Shangri La, 2013  
Watercolour, 35x50cm





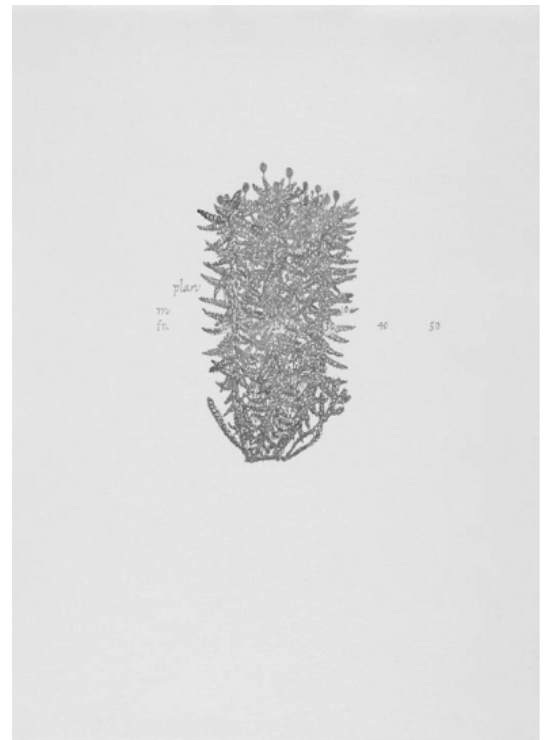
**Helena Goldwater**  
Bouffant, 2008  
Watercolour  
41x31cm



**Brad Hammond**  
Gosling Creek Drawing 3, 2011  
Bulrush reed, ink, watercolour  
110x85cm

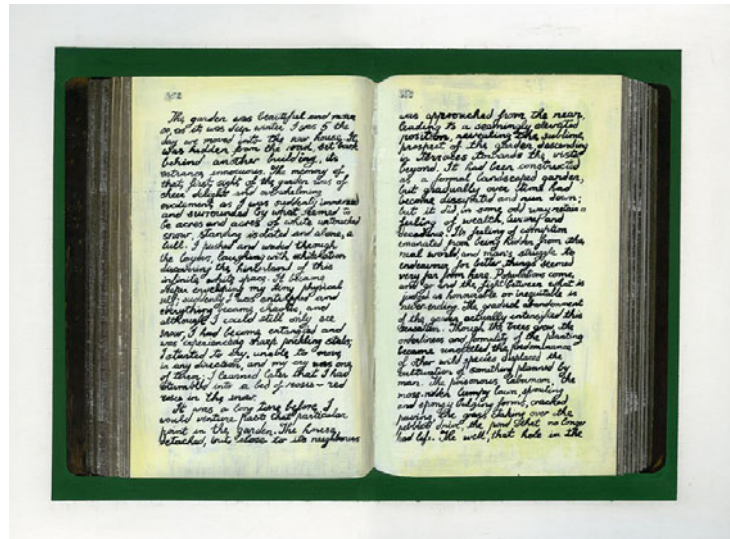


**Christine Borland**  
Satureja Montana, 2002  
Etching, ed of 20  
61x47cm



**Helen MacAlister**  
Moss Plan, 2006  
Pencil on paper  
42x29.7cm

**Liz Harrison**  
 Garden I, 2011  
 Gouache on paper, 32x46cm



**Alan Kilpatrick**  
 Anonymous, 2007  
 Mixed media (Henna, spices, incense)  
 70x50cm



**Eileen Lawrence**  
 Heron Cloud, 2000  
 Watercolour, 230x15cm



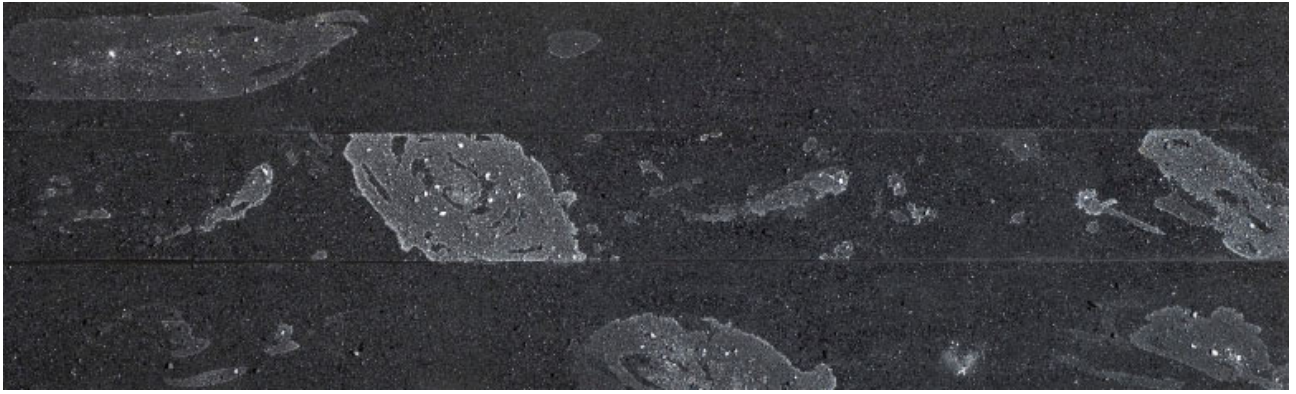
Above:  
**Simon Lewty**  
 Dartmoor, Known &  
 Unkown  
 1988  
 Pencil & acrylic on paper,  
 46x224cm



Above:  
**Anya Gallaccio**  
 Cast  
 2003  
 Acorns: Quercus Robur and Quercus  
 Rubra; one unique cast bronze  
 acorn;  
 box  
 Edition of 35, 15x15x5.5cm



Left:  
**Will Maclean**  
 Natural Selection  
 2013  
 Mixed media construction  
 73x57x8cm



Above:  
**Karel Nel**  
Dark Transmissions, 2008  
540 Million year old  
carboniferous dust & salt  
50x145cm



Right:  
**Lino Mannocci**  
Cloud (Nuvolo), 2003  
Oil on linen, 30x40cm



**Donald Teskey**  
The Gearagh III  
2010  
Acrylic on paper  
76x100cm



**Rebecca Partridge**  
Bough, 2012  
watercolour, 100x80cm



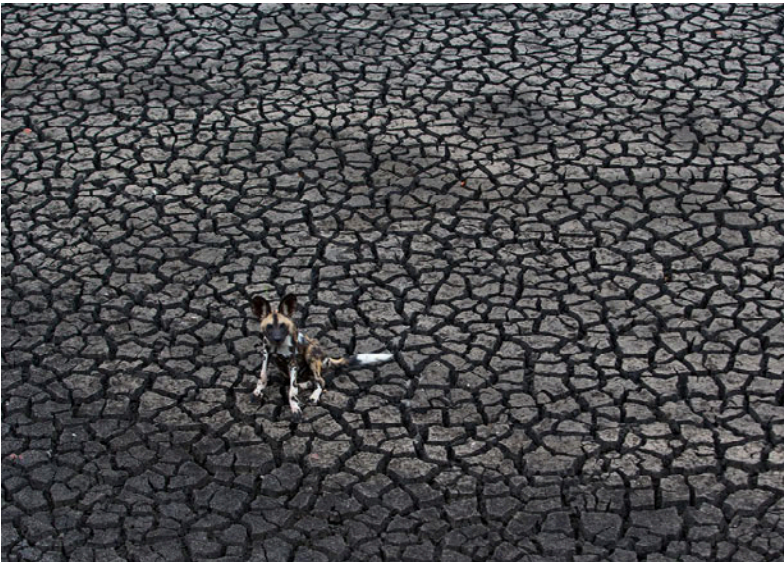
**Elizabeth Blackadder**  
Orchidaceae Laeliocattleya  
Chinco 'la Tuilerie'  
2009  
Etching, ed. of 80  
35x30cm

**Mimei Thompson**  
Taraxacum, 2013  
oil on canvas, 80x100cm





Top left:  
**Gary Schneider**  
Fig, 1991  
Silver gelatin print  
25x20cm



Top right:  
**Jake Harvey**  
Two Fishes, 1986  
Bronze, ed. of 9  
24x28x3cm



Middle left:  
**Kim Wolhuter**  
Dog Days, 2012  
Print on Hahnemuhle / dibond  
Edition of 10  
80x120cm

Bottom left:  
**Bridget Macdonald**  
Bull in Flowering Meadow  
2011  
Charcoal on paper  
122x153cm